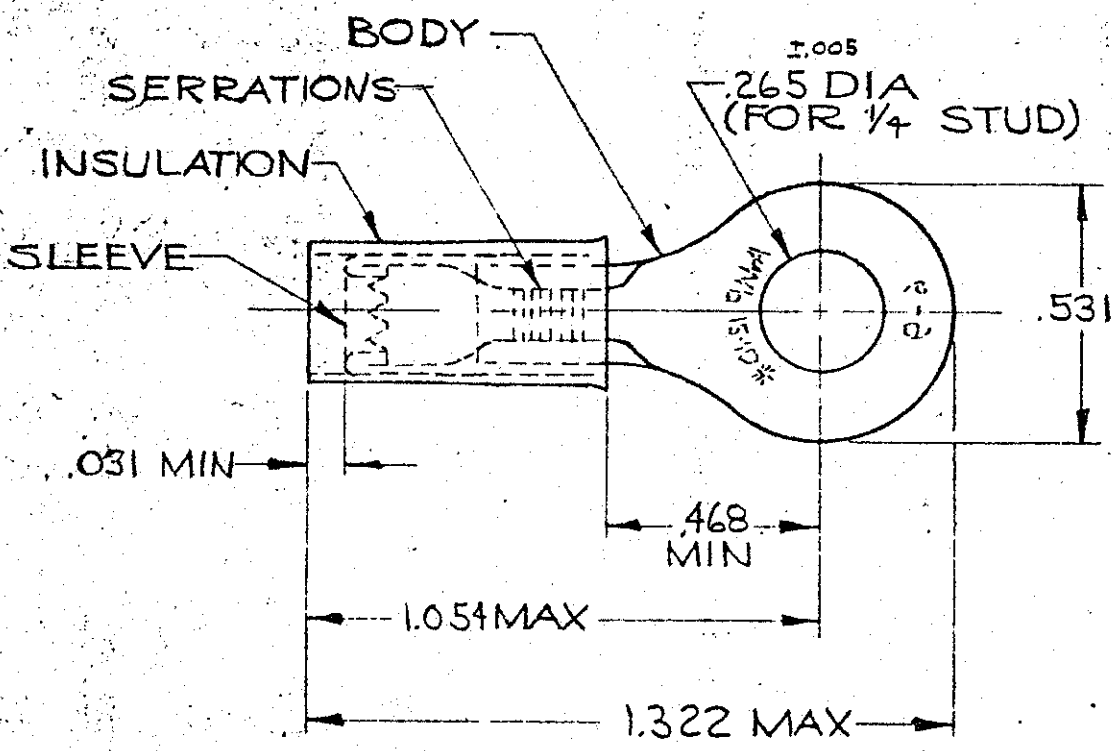


DRAWING MADE IN AMERICAN PROJECTION

LOC G 1410

© 1973 BY AMP INCORPORATED. ALL RIGHTS RESERVED. AMP PRODUCTS COVERED BY PATENTS AND/OR PATENTS PENDING.

REVISIONS			
LTR	DESCRIPTION	DATE	APPROVED
J	REV PER 003A-0770-00	4/10/00	JK/SM
K	REV PER 003A-0274-00	20/10/01	JK/SM



FOR .150 TO .250 WIRE INSULATION DIA.
TONGUE MATERIAL THK. = .040 ±.002

QTY	DESCRIPTION	PART NO
100	LOOSE PC, BOX	8-35110-1
25	LOOSE PC, BAG	8-35110-5
5	LOOSE PC, BLS	8-35110-4
25	LOOSE RE, BLS	9-35110-4

SUPERSEDED BY 8-35110-1
SUPERSEDED BY 8-35110-1
SUPERSEDED BY 8-35110-1

1	35110 ON TAPE	2-35110-1
1	WIRE TERMINAL	35110

BODY: COPPER (ASTM B 152)
TIN PL (MIL-T-10727)
SLEEVE: COPPER, (ASTM B 152)
INSULATION: NYLON COLOR YELLOW

QTY	DESCRIPTION	PART NO.
-----	-------------	----------

MATERIAL & FINISH

UNLESS OTHERWISE SPECIFIED DIMENSIONS ARE IN INCHES
TOLERANCES ON:
DECIMALS ± .008
ANGLES ± 5°

CONTRACT NO.	
DR.	<i>Stewart</i> 4-13-70
CHK	<i>W.C. Campbell</i> 4-16-70
APPD	<i>Swahel</i> 4-16-70
REL	<i>AM Engineering</i> 4-16-70
DSGN APPD	
OTHER APPD	



AMP INCORPORATED
HARRISBURG, PENNSYLVANIA

NAME
WIRE TERMINAL
P. I. D. G.-RING TONGUE
WIRE SIZE: 12-10

MATERIAL
SEE TABLE

SIZE	CODE IDENT NO.	NUMBER
A	00779	35110

SCALE NTS SHEET 1 OF 1

CUSTOMER DRAWING